

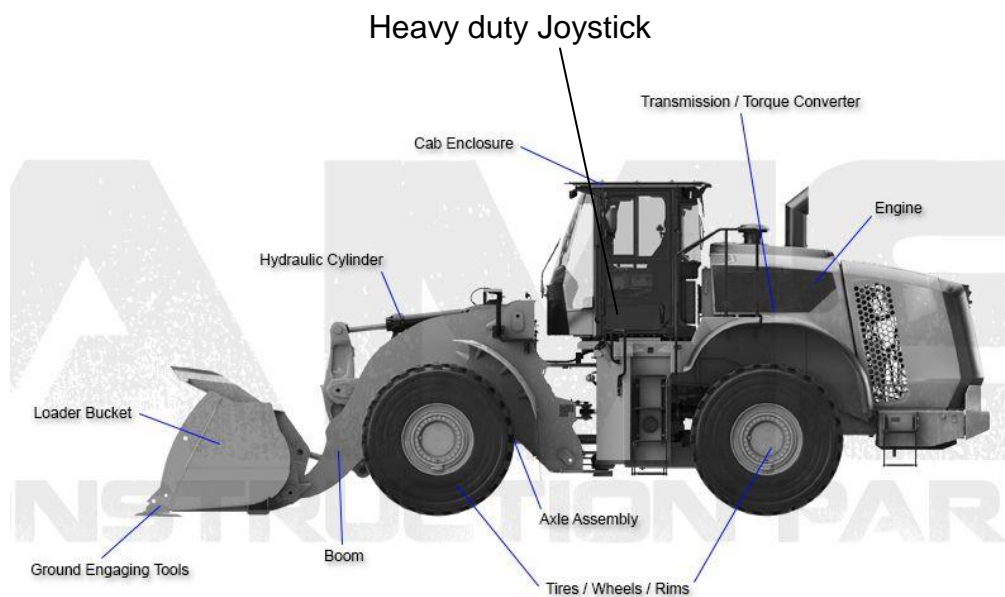
Application of Joystick in Front End Loader

A loader is a type of tractor, also known as a front end loader, bucket loader, scoop loader, or shovel, the front loader is a type of tractor that is normally wheeled and uses a wide square tilting bucket on the end of movable arms to lift and move material around. The loader assembly may be a removable attachment or permanently mounted on the vehicle. Often, the bucket can be replaced with other devices or tools, such as forks or a hydraulically operated bucket.

Operation:

The major components included in a loader are the engine (diesel in almost all cases), the hydraulic components (such as cylinder, pumps, motors and valves) and the transmission components (gearbox, axles, wheels/tracks, pumps, motors, etc.). The engine runs both the hydraulics and the transmission converter, and these in turn move the front attachment (a bucket, forks, sweeper, etc.) to manipulate the material which we are handling (sand, gravel, cereal, manure or anything else) and the wheels to move the machine around the jobsite.

A heavy duty joystick is used to control the direction or movement of Loader bucket.



Continued on Page 2

Heavy duty Joystick

