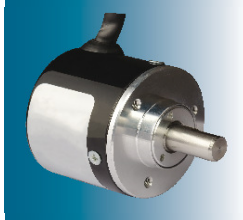


Heavy Duty : Incremental Rotary Position Sensors

RotaCol® **Diamondline** is the best choice for heavy duty applications. Robust aluminium housing with housing diameters of 40 mm, 50 mm & 58 mm are available. Stainless steel shaft with 8 mm \varnothing & 10 mm \varnothing shaft diameters are available. It has two ball bearings. Clamping flange has 3 mounting screws. It also has synchro flange and hollow shaft version. Hollow shaft housing can accommodate 8mm \varnothing shaft diameter. Complex bearings allow the use in construction machines, railways & trucks. In case of the incremental interface, one revolution generates N pulses of signal A or B. The reference mark signal is produced once per revolution. Absolute sensor information can be provided by counting the number of pulses which matches with the actual absolute angle. Any number of pulses per revolution from 2 to 128, 256, 512, 1024 ppr are programmable. Maximum number of pulses are now 1024 ppr (default).

40I DRKW



Interconnection : 5 core round cable with rubber grommet
2.5 mtr
[Link for Datasheet :](http://www.rotacol.info/40idrkw.pdf)
www.rotacol.info/40idrkw.pdf

Heavy Duty : 40mm \varnothing *Diamondline* Incremental Rotary Position Sensor

- 40mm \varnothing rugged aluminium housing
- Clamping flange with 3 mounting screws
- Two ball bearings
- 360° Mechanical & electrical angle
- 8mm \varnothing shaft diameter
- Heavy duty applications
- Stainless steel shaft
- Interconnection : 5 core round cable 2.5 mtr long with rubber grommet

| Type | 40I DRKW |
|-------------------|--|
| Electrical pulses | Any pulse from 2 to 128, 256, 512, 1024 ppr (1024 ppr std) |
| Supply voltage | 5V \pm 10% / 8-24VDC |
| Output signal | 5V TTL; 5V / 24V OC, PP, Line driver, High Line driver |
| Resolution | 4096 steps (12 bit) |
| Mech.speed (max) | 5000 rpm |
| Elec.speed (max) | 1600 rpm |
| Life rotations | ~ 75 million |

50I DRKW



Interconnection : 5 core round cable with rubber grommet
2.5 mtr
[Link for Datasheet :](http://www.rotacol.info/50idrkw.pdf)
www.rotacol.info/50idrkw.pdf

Heavy Duty : 50mm \varnothing *Diamondline* Incremental Rotary Position Sensor

- 50mm \varnothing rugged metal housing
- Clamping flange with 3 mounting screws
- Two ball bearings
- 360° Mechanical & electrical angle
- 8mm \varnothing shaft diameter
- Heavy duty applications
- Stainless steel shaft
- Interconnection : 5 core round cable 2.5 mtr long with rubber grommet

| Type | 50I DRKW |
|-------------------------|--|
| Electrical pulses (ppr) | Any pulse from 2 to 128, 256, 512, 1024 ppr (1024 ppr std) |
| Supply voltage | 5V \pm 10% / 8-24VDC |
| Output signal | 5V TTL; 5V / 24V OC, PP, Line driver, High Line driver |
| Resolution | 4096 step (12 bit) |
| Mech.speed (Max) | 5000 rpm |
| Elec.speed (max) | 1600 rpm |
| Life rotations | ~ 75 million |

50I DRKH



Interconnection : 5 core round cable with rubber grommet
2.5 mtr
[Link for Datasheet :](http://www.rotacol.info/50idrkh.pdf)
www.rotacol.info/50idrkh.pdf

Heavy Duty : 50mm \varnothing *Diamondline* Incremental Rotary Position Sensor

- 50mm \varnothing rugged metal housing
- Clamping flange with 2 screws
- Mounting flange (optional)
- Two ball bearings
- 360° Mechanical & electrical angle
- Can accommodate 8mm \varnothing shaft diameter
- Heavy duty applications
- Interconnection : 5 core round cable 2.5 mtr long with rubber grommet

| Type | 50I DRKH |
|-------------------|--|
| Electrical pulses | Any pulse from 2 to 128, 256, 512, 1024 ppr (1024 ppr. std) |
| Supply voltage | 5V \pm 10% / 8 - 24 VDC |
| Output signal | 5V TTL, 5V / 24V Open collector, Line driver, High line driver |
| Mech Speed (max) | 5000 rpm |
| Elec. Speed (max) | 1600 rpm |
| Life (rotations) | ~ 75 million |

58I DRKW

Heavy Duty Clamping Flange : 58mm \varnothing *Diamondline* Incremental Rotary Position Sensor



Interconnection : 5 core round cable with rubber grommet 2.5 mtr

[Link for Datasheet :](http://www.rotacol.info/58idrkw.pdf)
www.rotacol.info/58idrkw.pdf

- 58mm \varnothing rugged metal housing
- Clamping flange with 3 mounting screws
- Two ball bearings
- 360° Mechanical & electrical angle
- 10mm \varnothing shaft diameter
- Heavy duty applications
- Stainless steel shaft
- Interconnection : 5 core round cable 2.5 mtr long with rubber grommet

| Type | 58I DRKW |
|-------------------|--|
| Electrical pulses | Any pulse from 2 to 128, 256, 512, 1024 ppr (1024 ppr. std) |
| Supply voltage | 5V \pm 10% / 8 - 24 VDC |
| Output signal | 5V TTL, 5V / 24V Open collector, Line driver, High line driver |
| Resolution | 4096 steps (12 bit) |
| Mech. Speed (max) | 5000 rpm |
| Elec. speed (max) | 1600 rpm |
| Life (rotations) | ~ 75 million |

58I DRKS

Heavy Duty Synchro Flange : 58mm \varnothing *Diamondline* Incremental Rotary Position Sensor



Interconnection : 5 core round cable with rubber grommet 2.5 mtr

[Link for Datasheet :](http://www.rotacol.info/58idrks.pdf)
www.rotacol.info/58idrks.pdf

- 58mm \varnothing rugged metal housing
- Synchro flange with 3 mounting screws
- 360° Mechanical & electrical angle
- 10mm \varnothing shaft diameter
- Heavy duty applications
- Stainless steel shaft
- Interconnection : 5 core round cable 2.5 mtr long with rubber grommet

| Type | 58I DRKS |
|-------------------|--|
| Electrical pulses | Any pulse from 2 to 128, 256, 512, 1024 ppr (1024 ppr. std) |
| Supply voltage | 5V \pm 10% / 8 - 24 VDC |
| Output signal | 5V TTL, 5V / 24V Open collector, Line driver, High line driver |
| Resolution | 4096 steps (12 bit) |
| Mech. Speed (max) | 5000 rpm |
| Elec. speed (max) | 1600 rpm |
| Life (rotations) | ~ 75 million |