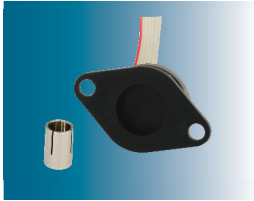


No Shaft Flange : SPI Rotary Position Sensor

RotaCol® No Shaft Flange contactless SPI interface rotary position sensors are available in 12, 22, 25, 28, 30 & 50mm housing diameter. There are two types of mounting flanges : with round hole and with oblong holes. As there is no shaft, no wear hence these are long life sensors. Magnet holders of different shaft diameters 6mm, 8mm, 1/4" and 1/8" can be provided on request. Magnet can be glued on user shaft. The Serial Peripheral Interface (SPI) is a bus system for a serial synchronous data transmission between different integrated circuits. The bus consists of a) 3 lines MOSI (Master Out --> Slave In) / MISO (Master In <-- Slave Out)- one common line, SCLK -(Serial Clock, output from master) and SS - Slave Select (active low; output from master) or b) 4 lines MOSI (Master Out --> Slave In), MISO (Master In <-- Slave Out), SCLK -(Serial Clock, output from master) and SS - Slave Select (active low; output from master). By these signal lines the master selects the slave for communication. With supply voltage of 5V ±10% output signal of SPI is provided. Dual channel SPI output is also available. Full duplex with 4 wire or half duplex with 3 wire are available.

22P ERCK

No Shaft Flange : 22mm Ø *Ecoline* SPI Rotary Position Sensor



Interconnection : flat cable

[Link for Datasheet :](http://www.rotacol.info/22perck.pdf)
www.rotacol.info/22perck.pdf

- 22mm Ø plastic housing
- Contactless Hall effect technology
- SPI output - 3 wire
- Magnet on user shaft
- No bearings
- Blind hole diameter : 13mm Ø
- No wear, long life
- Interconnection : 5 core flat cable 0.15 mtr long

Type	22P ERCK
Electrical angle	0 - 360°
Supply voltage	5V ± 10%
Output signal	Absolute SPI - (3 wire) Single/dual channel
Resolution Steps	16383 (14 bit)
Elec. speed (max)	800 rpm

28P ERCK

No Shaft Flange : 28mm Ø *Ecoline* SPI Rotary Position Sensor



Interconnection : flat cable

[Link for Datasheet :](http://www.rotacol.info/28perck.pdf)
www.rotacol.info/28perck.pdf

- 28mm Ø plastic housing
- Contactless Hall effect technology
- SPI output - 3 wire
- Magnet on user shaft
- No bearings
- Blind hole diameter : 19mm Ø
- No wear, long life
- Interconnection : 5 core flat cable 0.15 mtr long

Type	28P ERCK
Electrical angle	0 - 360°
Supply voltage	5V ± 10%
Output signal	Absolute SPI - (3 wire) Single/dual channel
Resolution Steps	16383 (14 bit)
Elec. speed (max)	800 rpm

25P RSK

No Shaft Flange : 25mm Ø *RS Speed Connect* SPI Rotary Position Sensor



Interconnection -
Terminal block

[Link for Datasheet :](http://www.rotacol.info/25prsk.pdf)
www.rotacol.info/25prsk.pdf

- 25mm Ø plastic housing
- Contactless Hall effect technology
- SPI output - 3 wire
- Magnet on user shaft
- No bearings
- Blind hole diameter : 13mm Ø
- No wear, long life
- Interconnection : cable gland (OCG),
miniature connector (OCM), terminal block
axial (OCTA) / radial (OCTR)

Type	25P RSK
Electrical angle	0 - 360°
Supply voltage	5V ± 10%
Output signal	Absolute SPI - (3 wire) Single/dual channel
Resolution Steps	16383 (14 bit)
Elec. speed (max.)	800 rpm

30P RSK

No Shaft Flange : 30mm Ø *RS Speed Connect* SPI Rotary Position Sensor



Interconnection - Cable gland

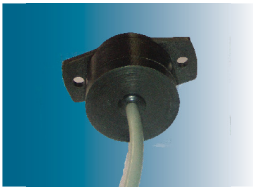
[Link for Datasheet :](http://www.rotacol.info/30prsk.pdf)
www.rotacol.info/30prsk.pdf

- 30mm Ø plastic housing
- Contactless Hall effect technology
- SPI output - 3 wire
- Magnet on user shaft
- No bearings, no wear, long life
- Blind hole diameter : 19mm Ø
- Interconnection : cable gland (OCG), miniature connector (OCM), terminal block axial (OCTA) / radial (OCTR)

Type	30P RSK
Electrical angle	0 - 360°
Supply voltage	5V ± 10%
Output signal	Absolute SPI - (3 wire) Single/dual channel
Resolution Steps	16383 (14 bit)
Elec. speed (max.)	800 rpm

30P LOCK

No Shaft Flange : 30mm Ø *LoColine* SPI Rotary Position Sensor



Interconnection - Round Cable with rubber grommet -OCR

[Link for Datasheet :](http://www.rotacol.info/30plock.pdf)
www.rotacol.info/30plock.pdf

- 30mm Ø plastic housing
- Contactless Hall effect technology
- SPI output - 4 wire
- Magnet on user shaft
- No bearings no wear, long life
- Blind hole diameter : 19mm Ø
- Very economical
- Interconnection : 6 core round cable

Type	30P LOCK
Electrical angle	0 - 360°
Supply voltage	3.3V±10% / 5V ± 10%
Output signal	Absolute SPI - (4 wire) 3.3V / 5V Single channel
Resolution Steps	16383 (14 bit)
Elec. speed (max.)	800 rpm

13P MCK

No Shaft Flange : 12mm Ø *MiniLine* SPI Rotary Position Sensor



Interconnection - Terminal block

[Link for Datasheet :](http://www.rotacol.info/13pmck.pdf)
www.rotacol.info/13pmck.pdf

- 12mm Ø plastic housing
- Miniature type
- Contactless Hall effect technology
- SPI output - 4 wire
- Magnet on user shaft
- No bearings, no wear, long life
- Blind hole diameter : 9.5mm Ø
- Interconnection : Terminal block

Type	13P MCK
Electrical angle	0 - 360°
Supply voltage	3.3V±10% / 5V ± 10%
Output signal	Absolute SPI - (4 wire) 3.3V / 5V Single channel
Resolution steps	16383 (14 bit)
Elec.speed (max)	800 rpm

50P DRCH

No Shaft Flange : 50mm Ø *Diamondline* SPI Rotary Position Sensor



Interconnection : 2.5 mtr round cable with rubbergrommet

[Link for Datasheet :](http://www.rotacol.info/50pdrch.pdf)
www.rotacol.info/50pdrch.pdf

- 50mm Ø rugged metal housing
- Clamping flange with 2 screws
- Mounting flange (optional)
- SPI output - 3 wire
- Two ball bearings
- 360° Mechanical & electrical angle
- Can accomodate 8mm Ø shaft diameter
- Heavy duty applications
- Interconnection : 5 core round cable 2.5 mtr long with rubber grommet

Type	50P DRCH
Electrical angle	0 - 360°
Supply voltage	5V ± 10%
Output signal	Absolute SPI - (3 wire) Single/dual channel
Resolution	16383 step (14 bit)
Mech.speed (max)	5000 rpm
Elec. speed (max)	800 rpm