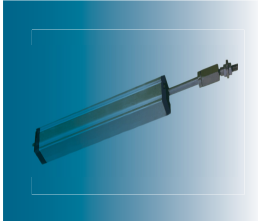


# LinoSense® Conductive Plastic - Small Stroke Linear motion Sensor

Small stroke length linear motion displacement sensors are widely used in different industries. Depending on the application they function as real sensors or indicators. The difference between sensors and indicators is only that an indicator does not have the same close tolerances as the sensor but is extremely low cost. In sensors & indicators there is a difference in the linearity tolerance and the repeatability. But in any case the indicator indicates a position whereas a sensor measures the position. The widest range upto a stroke length of 100 mm is available in conductive plastic as a resistance element. In spite of low cost, a reproducibility and a resolution is possible at the sensor between 50 µm and 150 µm. Nobody can expect from these low cost items a mechanical life of more than 20 million strokes. The more expensive types such as the MM types even go upto 20 million shaft movement. Some of them are equipped with internal or external springs to assure a proper spring return of the shaft.

## MTI 18

### Linear Displacement Sensor 18 x 18 mm Pulling rod type, Medium stroke length industrialstandard



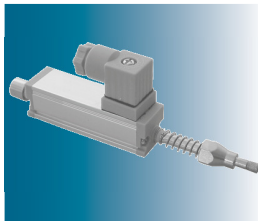
**Link for Datasheet :**  
[www.megauto.de/en/mti18.pdf](http://www.megauto.de/en/mti18.pdf)

- Conductive plastic resistive element
- Optional signal conditioner.
- Aluminium housing 18 mm square, plain bearings
- Plug or cable connection
- Accessories like ball joints or couplings
- Preloaded spring return

Stroke length	0 - 10 to 0 - 450 (For MTI)
Resolution	Quasi infinite
Linearity tolerance (%)	± 0.1
Repeatability (µm)	(typ.) 25 - 50
Power (watt)	3 - 10
Resistance value (Ω)	1k / 5k
Mechanical life (strokes)	20 million

## MTR 18

### Linear Displacement Sensor 18 x 18 mm Pulling rod type, Medium stroke length industrialstandard



**Link for Datasheet :**  
[www.megauto.de/en/mtr18.pdf](http://www.megauto.de/en/mtr18.pdf)

- Very small linear sensor
- Conductive plastic resistive element
- Optional signal conditioner.
- Aluminium housing 18 mm square, plain bearings
- Plug or cable connection
- Accessories like ball joints or couplings
- Preloaded spring return

Stroke length	0 - 10 to 0 - 100 (For MTR)
Resolution	Quasi infinite
Linearity tolerance (%)	± 0.1
Repeatability (µm)	(typ.) 25 - 50
Power (watt)	3 - 10
Resistance value (Ω)	1k / 5k
Mechanical life (strokes)	20 million

## MTC 13

### Linear motion displacement sensor 13 mm Diameter Conductive plastic high resolution, long life



**Link for Datasheet :**  
[www.megauto.de/en/mtc13.pdf](http://www.megauto.de/en/mtc13.pdf)

- 13 mm round housing.
- Conductive plastic resistive element.
- Mini design for limited space.
- Anodised Aluminium Housing.
- Push Pull rod type, plug or cable connection.

Stroke length	0 - 10 to 0 - 150 (For MTC13)
Resolution	Quasi infinite
Linearity tolerance (%)	± 0.1
Repeatability (mm)	± 0.01
Power (watt)	3 - 10
Operating Speed	5 m/s
Mechanical life (strokes)	30 million

## MTC 20

### Linear motion displacement sensor 20 mm Diameter Conductive plastic high resolution, long life



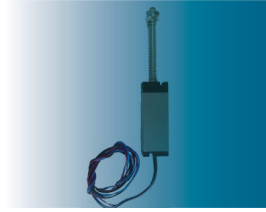
**Link for Datasheet :**  
[www.megauto.de/en/mtc20.pdf](http://www.megauto.de/en/mtc20.pdf)

- 20 mm round housing.
- Conductive plastic resistive element.
- Mini design for limited space.
- Anodised Aluminium Housing.
- Push Pull rod type, plug or cable connection.

Stroke length	0 - 10 to 0 - 100 (For MTC20)
Resolution	Quasi infinite
Linearity tolerance (%)	± 0.1
Repeatability (mm)	± 0.01
Power (watt)	3 - 10
Operating Speed	5 m/s
Mechanical life (strokes)	30 million

## MKS1

### Small stroke very low cost linear motion spring return displacement sensor



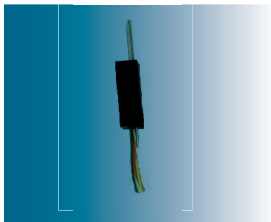
Link for Datasheet :  
[www.megauto.de/en/mks1.pdf](http://www.megauto.de/en/mks1.pdf)

- Metal housing, 15X10 mm, robust design.
- Aluminium housing with stainless steel link ball
- Stroke length (mm) - 10,25,45...50.
- Compact Design for Limited Space
- Double Sleeve Bearing.

Stroke length	0 - 10 to 0 - 50
Resolution	Quasi infinite
Linearity tolerance (%)	±1
Repeatability (mm)	± 0.01
Power (watt)	3
Operating Speed	3 m/s
Mechanical life (strokes)	20 million

## MM10

### Linoseense Small stroke Potentiometric long life displacement sensor



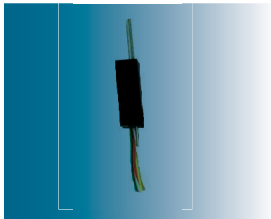
Link for Datasheet :  
[www.megatronsensord.de/mm10.pdf](http://www.megatronsensord.de/mm10.pdf)

- Conductive plastic element
- Electrical travel : 10mm
- Return spring (lower life)
- Resistance value : 5K
- Special tolerances : ±15%
- Push rod material : stainless steel
- Two sleeve bearings

Series	MM10
Electrical travel	0 - 8 / 0 - 12 mm
Resolution	element infinite
Linearity tolerance	± 2 %
Repeatability	(approx.) 50 µm
Life (movements)	20 million
Resistance range (Ω)	0 - 5k, 0 - 10k
Mechanical life	20 million

## MM30

### Linoseense Small stroke Potentiometric long life displacement sensor



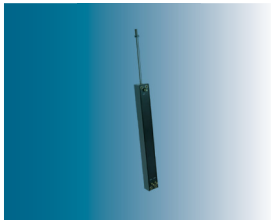
Link for Datasheet :  
[www.megatronsensord.de/mm30.pdf](http://www.megatronsensord.de/mm30.pdf)

- Conductive plastic element
- Electrical travel : 30mm
- Return spring (lower life)
- Resistance value : 500 to 10K
- Special tolerances : ±10%
- Push rod material : stainless steel
- Two sleeve bearings

Series	MM30
Electrical travel	0 - 10 / 0 - 30 mm
Resolution	element infinite
Linearity tolerance	± 1%
Repeatability	(approx.) 50 µm
Life (movements)	40 million
Resistance range (Ω)	0 - 5k, 0 - 10k

## CLP13

### Linoseense Small stroke Potentiometric long life displacement sensor



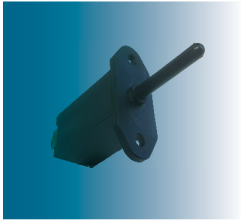
Link for Datasheet :  
[www.megatronsensord.de/clp13.pdf](http://www.megatronsensord.de/clp13.pdf)

- Conductive plastic element
- Electrical travel : 30mm
- Return spring (lower life)
- Resistance value : 500 to 10K
- Special tolerances : ±10%
- Push rod material : stainless steel
- Two sleeve bearings

Series	CLP13
Electrical travel	0 -13 / 0 - 100 mm
Resolution	element infinite
Linearity tolerance	± 0.5 %
Repeatability	(approx.) 50 µm
Life (movements)	40 million
Resistance range (Ω)	0 - 5k, 0 - 10k

## MKP

## Linoseense Small Stroke long life spring return displacement sensor

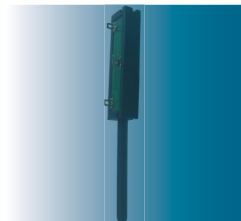


- Stroke length 0 -10,0 - 20 mm
- Very low cost linear sensor
- Plastic housing ,Plastic Shaft
- Flange mountable
- Usable as displacement indicator with/without integrated spring return.
- Conductive plastic element.

**Link for Datasheet :**  
[www.megauto.de/mkp.pdf](http://www.megauto.de/mkp.pdf)

## MKTP

## Linoseense Small Stroke long life spring return displacement sensor



- Plastic housing ,Plastic Shaft.
- Spring return sensor possible.
- Stroke length (mm):0-10, 0-25,0-45.
- Linearity :  $\pm 1\%$ .
- Repeatability  $\pm 0.01$  mm.
- Conductive Plastic Element.
- Operation life 5 million movements.

**Link for Datasheet :**  
[www.megauto.de/mktp.pdf](http://www.megauto.de/mktp.pdf)