

## Servo mount : PWM Rotary Position Sensor

Precision contactless Hall Rotary position sensors are available in aluminium housing with stainless steel shafts and precision ball bearings. Servo mounting method is available in 12, 22, 36, 50 & 58 mm housing diameter with shaft diameters of 3, 6, 10 mm, 1/8", 1/4" are available. PWM as an output is pulse width modulated signal based on constant carrier frequency which defines high to low ratio. The ratio between high & low corresponds to the signal characteristics. Within one period of this frequency the change in duty cycle indicates the angle. PWM single and dual channel outputs are available.

### 12W M/Z MCS



Interconnection - Flat cable

**Link for Datasheet :**  
[www.rotacol.info/12wmmcs.pdf](http://www.rotacol.info/12wmmcs.pdf)  
[www.rotacol.info/12wzmcs.pdf](http://www.rotacol.info/12wzmcs.pdf)

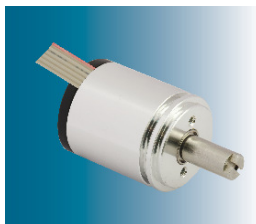
### Servo mount : 12 mm Ø *Miniline* PWM Rotary Position Sensor

- 12 mm Ø metal housing
- Precision Miniature servo mount
- Low cost , Hall effect technology
- 360° Mechanical & electrical angle
- Aluminium housing with stainless steel shaft
- Shaft diameter :  
 Metric shaft : 3mm (MMCS)  
 Inch shaft : 1/8" (ZMCS)
- 2 Precision Ball bearings
- Interconnection :  
 3 core flat cable 0.15 mtr long

#### Type **12W M/Z MCS**

Electrical angle	0-20° to 0-360° in 1°step prog. (std 360°)
Supply voltage	5V±10%
Output signal	PWM single channel
Resolution steps	4096 (12 bit)
Mech.speed (max)	3000 rpm
Elec. speed (max)	160 rpm
Life (rotations)	~ 15 million

### 22W M/Z SL RCS



Interconnection - Flat cable

**Link for Datasheet :**  
[www.rotacol.info/22wmslracs.pdf](http://www.rotacol.info/22wmslracs.pdf)  
[www.rotacol.info/22wzslracs.pdf](http://www.rotacol.info/22wzslracs.pdf)

### Servo Mount : 22 mm Ø *Silverline* PWM Rotary Position Sensor

- 22mm Ø metal housing
- Servo mount : Synchro 9
- Low cost , Hall effect technology
- 360° Mechanical & electrical angle
- Aluminium housing with stainless steel shaft
- Metric shaft : 6mm (MSL RCS)  
 Inch shaft : 1/8" (ZSL RCS)
- 2 Precision Ball bearings
- Interconnection :  
 3 core flat cable 0.15 mtr long (std)  
 terminal block (option)

#### Type **22W M/Z SL RCS**

Electrical angle	0-20° to 0-360° in 1°step prog. (std 360°)
Supply voltage	5V±10%
Output signal	PWM Single / dual channel
Resolution Steps	4096 (12 bit)
Mech. speed (Max)	6000 rpm
Elec. speed (Max)	160 rpm
Life (rotations)	~ 25 million

### 36W M/Z SL RCS



Interconnection -  
Soldering pins OCP

**Link for Datasheet :**  
[www.rotacol.info/36wmslracs.pdf](http://www.rotacol.info/36wmslracs.pdf)  
[www.rotacol.info/36wzslracs.pdf](http://www.rotacol.info/36wzslracs.pdf)

### Servo Mount : 36 mm Ø *Silverline* PWM Rotary Position Sensor

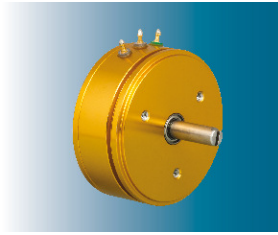
- 36mm Ø metal housing
- Servo mount ; synchro15
- Hall effect technology
- 360° Mechanical & electrical angle
- Aluminium housing with stainless steel shaft
- Metric shaft : 6mm (MSL RCS)  
 Inch shaft : 1/4" (ZSL RCS)
- 2 Precision Ball bearings
- Interconnection : 3 core round cable - (std),  
 cable gland (OCG), Miniature push-pull  
 connector (OCM), terminal block axial (OCTA)  
 / radial (OCTR) - (option)

#### Type **36W M/Z SL RCS**

Electrical angle	0-20° to 0-360° in 1°step prog. (std 360°)
Supply voltage	5V±10%
Output signal	PWM single / dual channel
Resolution	4096 step (12 bit)
Mech.Speed (max)	8000
Elec. speed (Max)	160 rpm
Life (rotations)	~ 35 million

## 50W MSL RCS

## Servo Mount : 50 mm Ø *Silverline* PWM Rotary Position Sensor



Interconnection - 3 soldering pins  
- OCP

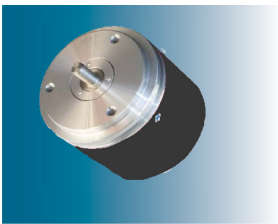
**Link for Datasheet :**  
[www.rotacol.info/50wmslracs.pdf](http://www.rotacol.info/50wmslracs.pdf)

- 50mm Ø metal housing
- Servo mount ; synchro 20
- Hall effect technology
- 360° Mechanical & electrical angle
- Aluminium housing with stainless steel shaft
- Shaft diameter : 6mm Ø
- 2 Precision Ball bearings
- Interconnection : 3 core round cable - (std), cable gland (OCG), Miniature push-pull connector (OCM), terminal block axial (OCTA) / radial (OCTR) - (option)

Type	50W MSL RCS
Electrical angle	0-20° to 0-360° in 1° step prog. (std 360°)
Supply voltage	5V±10%
Output signal	PWM Single / dual channel
Resolution	4096 step (12 bit)
Mech.Speed (max)	9000
Elec. speed (Max)	160 rpm
Life (rotations)	~ 40 million

## 58W DRCS

## Servo Mount : 58 mm Ø *Diamondline* PWM Rotary Position Sensor



Interconnection :  
2.5 mtr round cable

**Link for Datasheet :**  
[www.rotacol.info/58wdracs.pdf](http://www.rotacol.info/58wdracs.pdf)

- 58mm Ø rugged metal housing
- Synchro flange with 3 mounting screws
- 360° Mechanical & electrical angle
- 10mm Ø shaft diameter
- Heavy duty applications
- Stainless steel shaft
- Interconnection : 3 core round cable with rubber grommet 2.5 mtr

Type	58W DRCS
Electrical angle	0°-20° to 0°-360° in 1° steps prog. (std 360°)
Supply voltage	5V±10%
Output signal	PWM Single/dual channel
Resolution	4096 steps (12 bit)
Mech.Speed (max)	5000 rpm
Elec.Speed (max)	160 rpm
Life (rotations)	~ 75 million