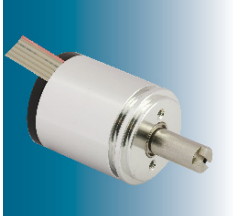


Servo mount : Incremental Rotary Position Sensor

RotaCol® Servo Mount contactless Hall Rotary position sensors are available in aluminium housing with stainless steel shafts and precision ball bearings. Servo mounting method is available in 22,36,50 & 58 \varnothing mm housing diameter with 6 mm, 1/4" and 10mm shaft diameter are available. In case of the incremental interface, A and B are quadrature signals, shifted by 90° and signal Z is a reference mark. The width of Z pulse is 1/4th of quadrature signal period and is match with A and B high. One revolution generates N pulses of signal A or B. The reference mark signal is produced once per revolution. RotaCol series provides an absolute sensor information by counting the number of pulses which matches with the actual absolute angle. Any number of pulses per revolution from 2 to 128,256, 512, 1024 ppr are programmable. Maximum number of pulses are now 1024 ppr (default).

22I M/Z SL RCS

Servo Mount : 22 mm \varnothing Silverline Incremental Rotary Position Sensor



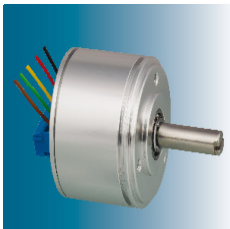
Interconnection -
Flat cable OCF (Standard)
Link for Datasheet :
www.rotacol.info/22imslrcs.pdf
www.rotacol.info/22izslrcs.pdf

- 22 mm \varnothing metal housing
- Servo mount
- Low cost , Hall effect technology
- 1024 ppr standard
- Aluminium housing with stainless steel shaft
- Shaft diameters :
Metric : 6mm (MSL)
Inch : 1/8" (ZSL)
- 2 Precision Ball bearings
- Interconnection -
5 core flat cable 0.15 mtr long (Std),
terminal block (option)

Type	22I M/Z SL RCS (Synchro 9)
Electrical pulses	Any pulse from 2 to 128, 256, 512, 1024 ppr (1024 ppr. std)
Supply voltage	5V \pm 10% / 9 - 30 VDC
Output signal	5V TTL, 5V / 24V Open collector
Resolution	4096 steps (12 bit)
Mech. speed (max)	6000 rpm
Elec. speed (max)	1600 rpm
Life (rotations)	~ 25 million

36I M/Z SL RCS

Servo Mount : 36 mm \varnothing Silverline Incremental Rotary Position Sensor



Interconnection - terminal block
Link for Datasheet :
www.rotacol.info/36imslrcs.pdf
www.rotacol.info/36izslrcs.pdf

- 36 mm \varnothing metal housing
- Servo mount
- Low cost , Hall effect technology
- 1024 ppr standard
- Aluminium housing with stainless steel shaft
- Shaft diameters :
Metric : 6mm (MSL)
Inch : 1/4" (ZSL)
- 2 Precision Ball bearings
- Synchro size :15
- Interconnection -
5 core round cable - (std), 5 Pins (OCP)
cable gland (OCG) / miniature connector (OCM)
/ terminal block axial (OCTA) / radial (OCTR) -
(option)

Type	36I M/Z SL RCS (Synchro 15)
Electrical Pulses	Any pulse from 2 to 128, 256, 512, 1024 ppr (1024 ppr. std)
Supply voltage	5V \pm 10% / 9 - 30 VDC
Output signal	5V TTL, 5V / 24V Open collector
Resolution	4096 step (12 bit)
Mech.Speed (max)	8000 rpm
Elec.Speed (max)	1600 rpm
Life (rotations)	~ 35 million

50I MSL RCS

Servo Mount : 50mm \varnothing Silverline Incremental Rotary Position Sensor



Interconnection - cable gland
Link for Datasheet :
www.rotacol.info/50imslrcs.pdf

- 50 mm \varnothing metal housing
- Servo mount
- Low cost , Hall effect technology
- 1024 ppr standard
- Aluminium housing with stainless steel shaft
- Shaft diameter : 6mm
- 2 Precision Ball bearings
- Synchro size :20
- Interconnection -
5 core round cable with rubber grommet - (std),
5 Pins (OCP,) cable gland (OCG) / miniature
connector (OCM) / terminal block axial (OCTA) /
radial (OCTR) - (option)

Type	50I MSLRCS (Synchro 20)
Electrical pulses	Any pulse from 2 to 128, 256, 512, 1024 ppr (1024 ppr. std)
Supply voltage	5V \pm 10% / 9 - 30 VDC
Output signal	5V TTL, 5V / 24V Open collector
Resolution	4096 step (12 bit)
Mech.Speed (max)	9000 rpm
Elec.Speed (max)	1600 rpm
Life (rotations)	~ 40 million

58I DRKS

Servo Mount : 58mm \varnothing *Diamondline* Incremental Rotary Position Sensor



Interconnection : 5 core round cable 2.5 mtr long with rubber grommet

Link for Datasheet :
www.rotacol.info/58idrks.pdf

- 58mm \varnothing rugged metal housing
- Synchro flange with 3 mounting screws
- 360° Mechanical & electrical angle
- 10mm \varnothing shaft diameter
- Heavy duty applications
- Stainless steel shaft
- Interconnection : 5 core round cable 2.5 mtr long with rubber grommet

Type	58I DRKS
Electrical pulses	Any pulse from 2 to 128, 256, 512, 1024 ppr (1024 ppr. std)
Supply voltage	5V \pm 10% / 8 - 24 VDC
Output signal	5V TTL, 5V / 24V Open collector, Line driver, High line driver
Resolution	4096 steps (12 bit)
Mech. Speed (max)	5000 rpm
Update rate	10KHz
Life (rotations)	~ 75 million